



INSTRUCTION BULLETIN

No. 9013874
Machine: S30
Published: 06-2015
Rev. 00

NOTE: DO NOT DISCARD the Parts List from the Instruction Bulletin. Place the Parts List in the appropriate place in the machine manual for future reference. Retaining the Parts List will make it easier to reorder individual parts and will save the cost of ordering an entire kit.

NOTE: Numbers in parenthesis () are reference numbers for parts listed in Bill of Materials.

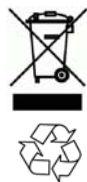
Installation instructions for **kit number 9013873**

SYNOPSIS:

This kit contains the parts needed to install a vacuum wand kit on S30 sweepers (machines serial numbers 006501 or higher). Please follow step-by-step instructions.

SPECIAL TOOLS / CONSIDERATIONS: NONE

(Estimated time to complete: 60 minutes)



PROTECT THE ENVIRONMENT

Please dispose of packaging materials, used machine components such as batteries and fluids in an environmentally safe way according to local waste disposal regulations.

Always remember to recycle.

PREPARATION:

FOR SAFETY: Before leaving or servicing machine, stop on level surface, turn off machine, remove key, and set parking brake.

1. Disconnect the battery cables from the battery.

 **WARNING: Always disconnect battery cables from machine before working on electrical components.**

INSTALLATION:

NOTE: If the machine is equipped with a basic control panel (S30) proceed to Step 1. If the machine is equipped with a touch panel (S30 XP and S30 X4) proceed to Step 7.

1. Remove the hardware securing the switch panel to the instrument console. Set the hardware aside. (Fig. 1)

2. Carefully pull the switch panel from the instrument console. Do not break any wire / cable connections when removing the switch panel from the instrument console. (Fig. 1)
3. Remove the plug from the vacuum wand location on the switch panel. Discard the plug. (Fig. 1)
4. Install the rocker switch (42) into the vacuum switch location on the switch panel. (Fig. 1)
5. Connect the main wire harness to the rocker switch (42). (Fig. 1)
6. Reinstall the switch panel into the instrument console. (Fig. 1)

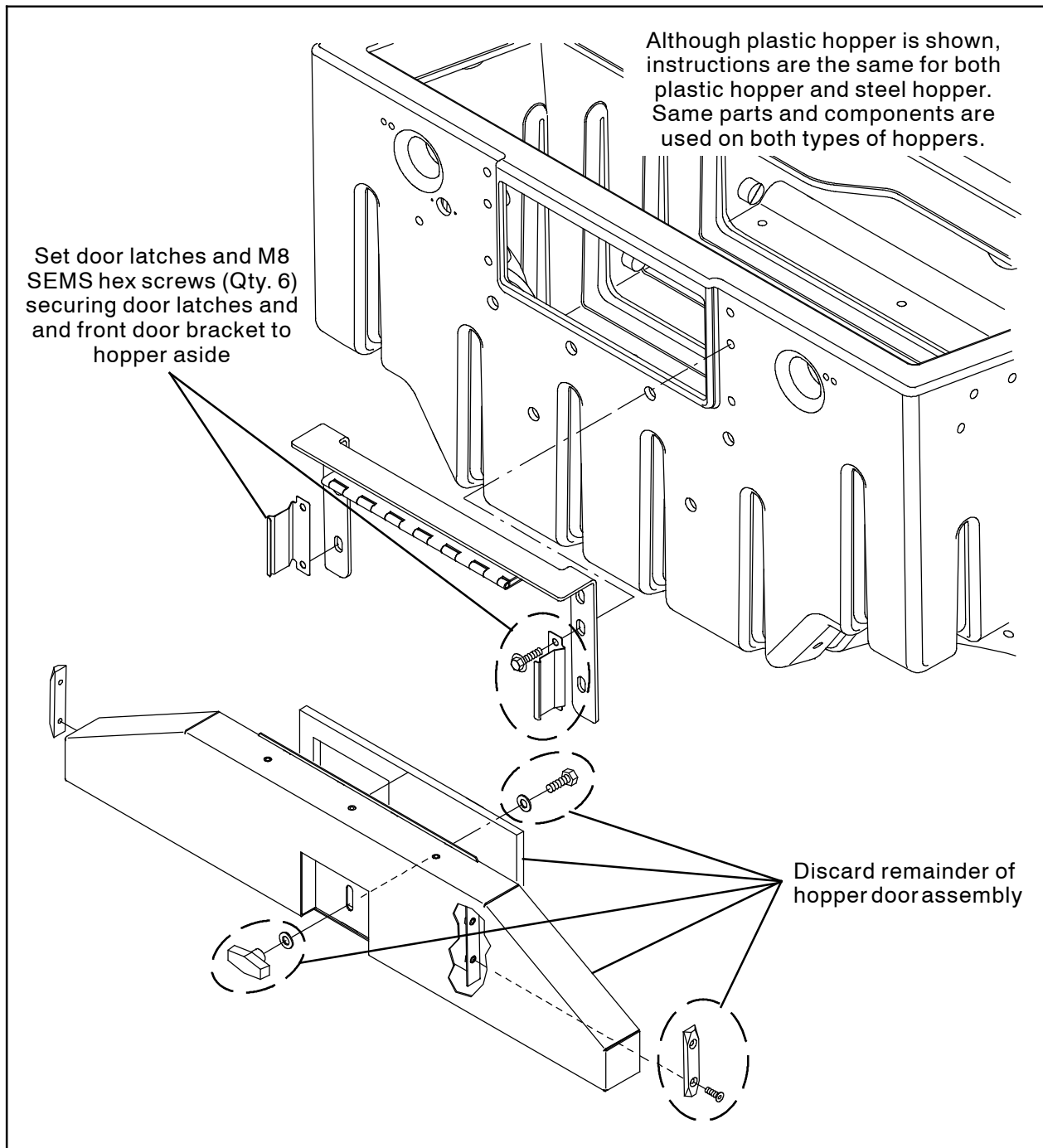


FIG. 2

7. Remove the existing hopper door from the hopper. Set both door latches and the six hex screws aside. Discard the remainder of the hopper door assembly. (Fig. 2)

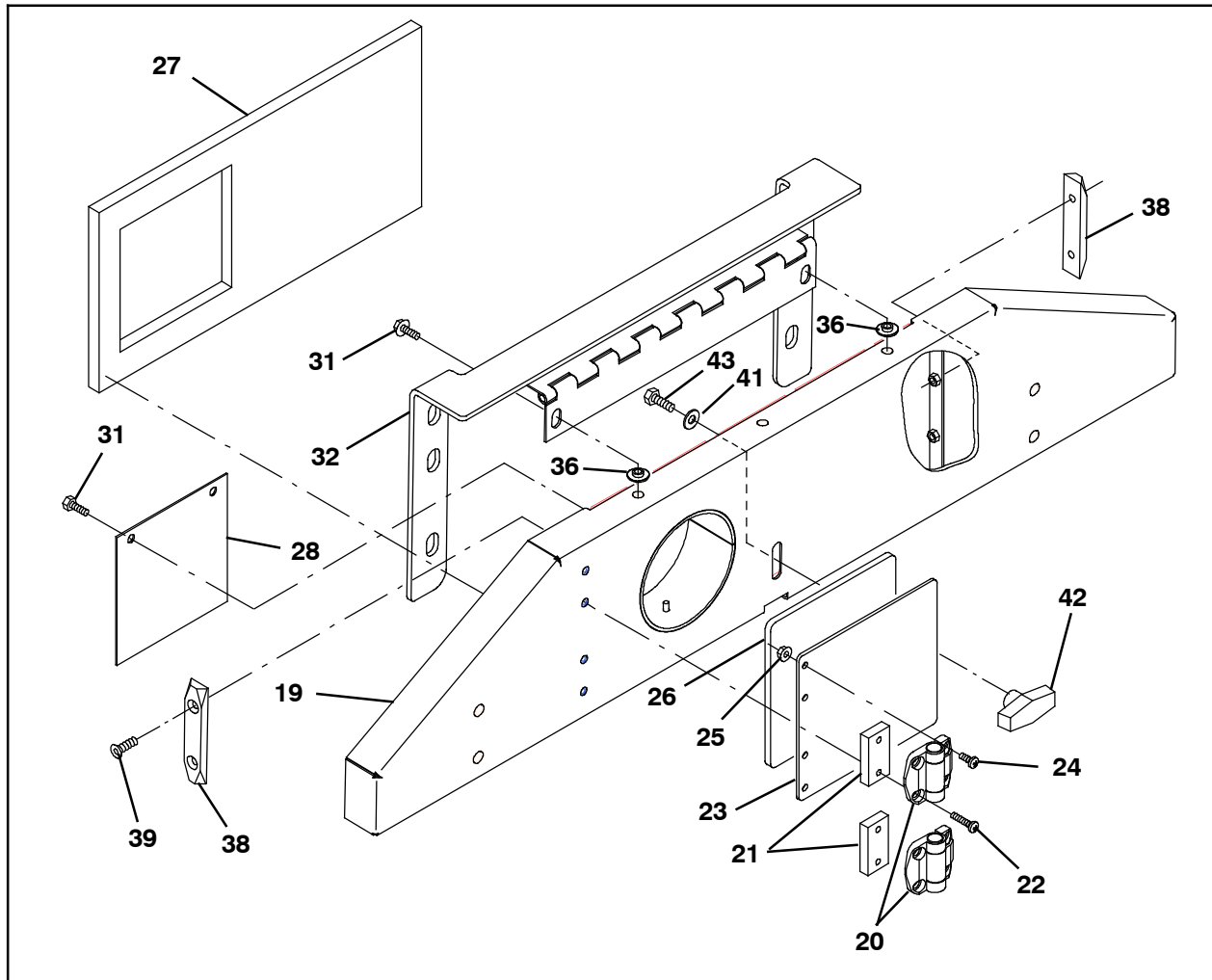


FIG. 3

8. Use a hex screw (43) and flat washer (41) to install the plastic knob (40) onto the hopper door (19). (Fig. 3)
9. Install the plastic adhesive seal (26) onto the vacuum wand door (23). (Fig. 3)
10. Use four M5 pan screws (24) and four M5 hex nuts (25) to install the two hinges (20) onto the vacuum wand door (23). (Fig. 3)
11. Use four M5 pan screws (22) and two hinge spacers (21) to install the vacuum wand door assembly assembled in the previous step onto the hopper door (19). (Fig. 3)
12. Use two pan screws (39) to install each nylon block (38) onto the hopper door (19). (Fig. 3)
13. Use two SEMS M6 hex screws (31) to install the vacuum wand flap (28) onto the hopper door (19). (Fig. 3)
14. Install the urethane gasket (27) onto the hopper door (19). (Fig. 3)
15. Use two SEMS M6 hex screws (31) and two flange sleeves (36) to install the door bracket (32) onto the hopper door (19). (Fig. 3)
16. Use saved M8 SEMS hex screws to install the hopper door assembly and the saved door latches onto the hopper. (Fig. 2 / Fig. 3)
17. Remove the plastic plugs from the front bumper. Discard the plugs. (Fig. 4)
18. Use two M8 hex screws (16) and two flat washers (2) to install each tube bracket (14) onto the front bumper. (Fig. 4)
19. Use one M5 pan screw (7), one flat washer (34), and one M5 lock hex nut (33) to install each sleeve (35) onto the hose tube (1). (Fig. 4)

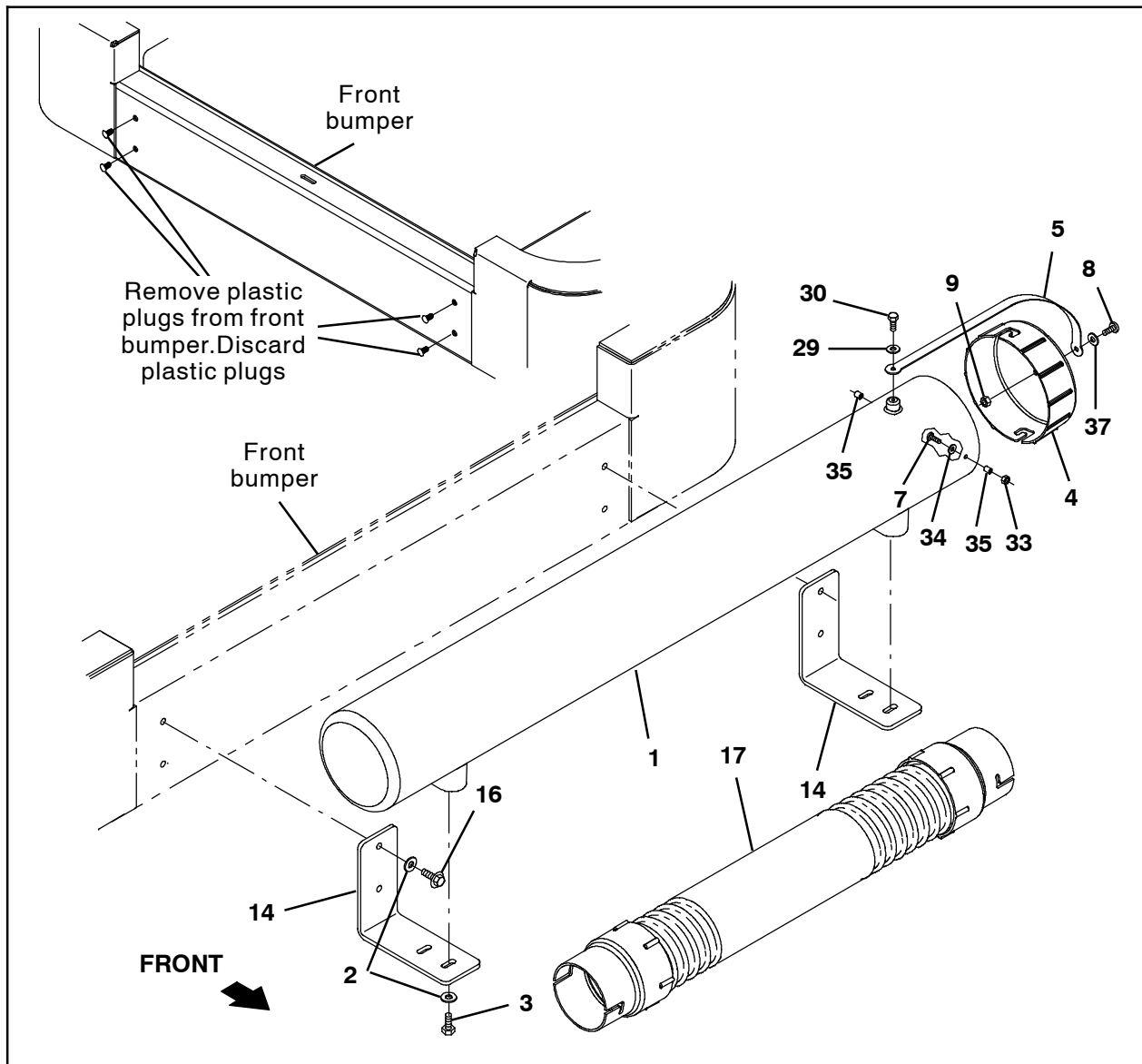


FIG. 4

20. Use one hex screw (30) and one flat washer (29) to install the cap strap (5) onto the hose tube (1). (Fig. 4)
21. Use one M6 pan screw (8), one flat washer (37), and one M6 lock hex nut (9) to install the cap strap (5) onto the hose enclosure cap (4). (Fig. 4)
22. Use two M8 hex screws (3) and two flat washers (2) to install the hose tube (1) onto each tube bracket (14). (Fig. 4)
23. Use two M8 SEMS hex screws (15) to install each wand bracket (13) onto the hopper door (19). (Fig. 5)
24. Install the straps (6) onto each wand bracket (13). (Fig. 5)
25. Use a hose clamp (12) to install the hose nozzle (11) and the hose (18) onto the vacuum wand (10). (Fig. 5)
26. Use the straps (6) to secure the vacuum wand assembly to each wand bracket (13). (Fig. 5)
27. Secure the vacuum hose (17) inside the hose tube assembly (1). (Fig. 5)
28. Reconnect the battery cables to the battery.
29. Start and test the machine. Assemble the vacuum wand assembly and connect the vacuum wand assembly to the machine. Refer to the Operators Manual for information how to assemble and operate the vacuum wand assembly.

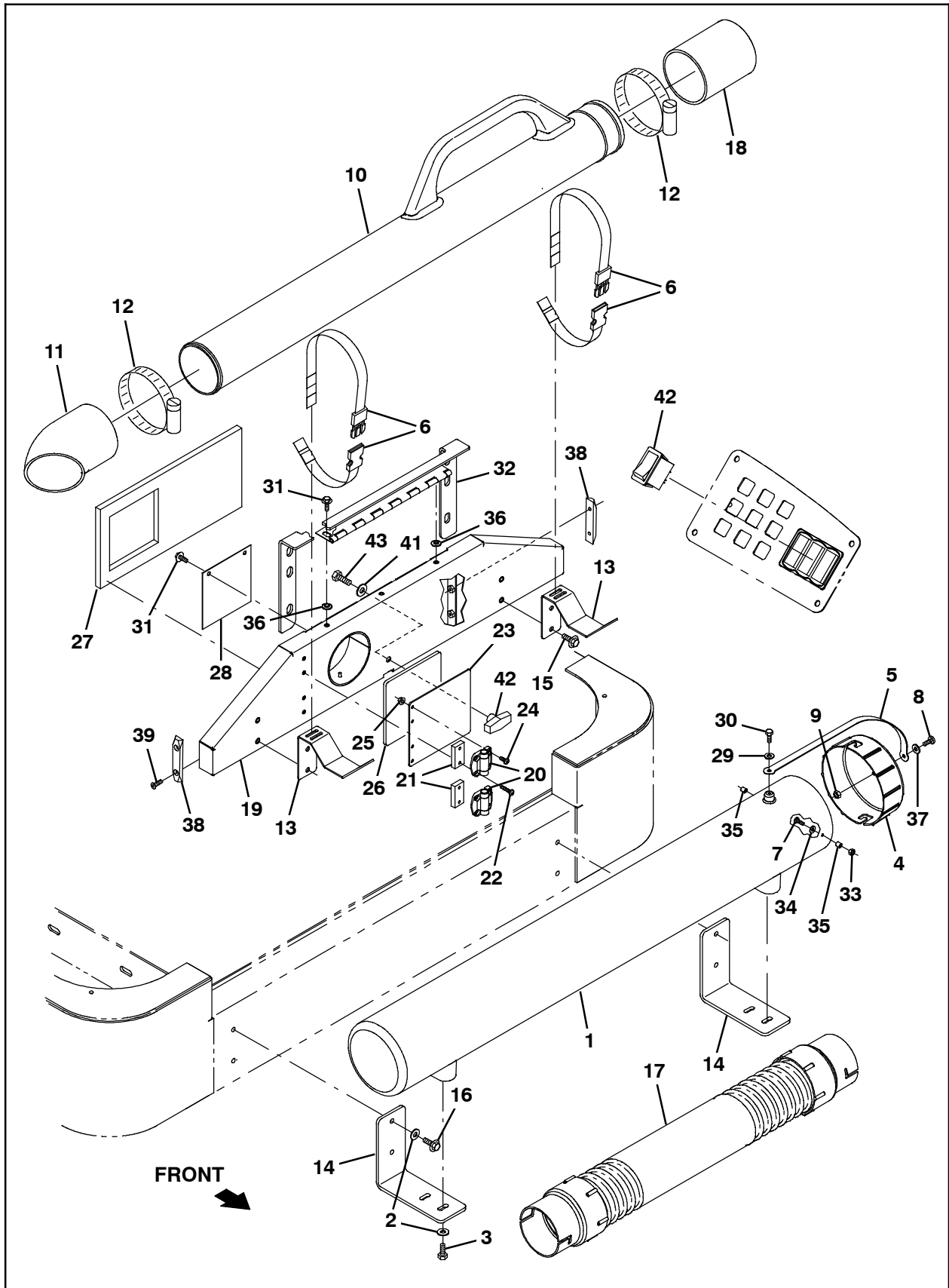


FIG. 5

Bill Of Materials For Wand Kit, Vacuum, CI [Roto, S30] - 9013873

Ref.	Tennant Part No.	Description	Qty.
1	1032752	Tube, Hose	1
2	32491	Washer, Flat, 0.31, Std	8
3	16931	Screw, Hex, M8 X 1.25 X 20, 8.8	4
4	1041473	Cap, Enclosure, Hose	1
5	1041754	Strap, Cap, Enclosure	1
6	367974	Strap, Pyp, 0.07 1.0w 18.5l, W/ Buckle	2
7	06934	Screw, Pan, Phl, M5 X 0.80 X 20, 4.8	6
8	09145	Screw, Pan, Phl, M6 X 1.00 X 16, 4.8	1
9	08708	Nut, Hex, Lock, M6 X 1.00, NI	1
10	1032584	Wand, Vacuum	1
11	1032707	Hose, Nozzle, Floor	1
12	79380	Clamp, Hose, Wormdrive, 3.75- 4.62d, .62w	2
13	1214153	Bracket, Mtg, Wand	2
14	1046993	Bracket, Mtg, Tube	2
15	1020341	Screw, Hex, M8 X 1.25 X 20, SS, SEMS	6
16	763045	Screw, Hex, M8 X 1.25 X 20, Fmg	4
17	1042718	Hose Assy, W/2cuff, 4.0d 156l 4.0/4.0	1
18	1041882	Hose, Rbr	1
19	1214258	Door, Vacuum	1
20	367950	Hinge, .40pin 2.2w 02.0l, 4/0.21h	2
21	1214152	Block, Spacer, Hinge	2
22	06935	Screw, Pan, Phl, M5 X 0.80 X 25, 4.8	4
23	1214258	Door , Vacuum	1
24	06932	Screw, Pan, Phl, M5 X 0.80 X 10, 4.8	4
25	07789	Nut, Hex, Flng, M5 X 0.80	4
26	1039007	Seal, Ure, .25, 06.0w 06.0l, Adh	1
27	1035660	Gasket, Ure, .50, 07.47w, 15.47l, Adh	1
28	1039038	Flap, Wand, Vacuum	2
29	01683	Washer, Flat, 10, SS	1
30	383000	Screw, Hex, 12- 16 X 0.75	1
31	1040467	Screw, Hex, M6 X 1.00 X 20, 9.8, SEMS	7
32	1214034	Bracket Wldt, Door, Front	1
33	06549	Nut, Hex, Lock, M5 X 0.80, NI	2
34	19066	Washer, Flat, 0.25b 0.56d .05, PI, 10	2
35	610943	Sleeve, P/M, 0.22b 0.32d 0.4l, PI	2
36	1213565	Sleeve, Flange	2
37	01684	Washer, Flat, 0.27b 0.69d .05, SS	1
38	1213971	Block, Nylon	2
39	09062	Screw, Flt, Soc, M6 X 1.00 X 16, 10.9	4
40	04706	Knob, Tee, 0.38- 16, 2.5 X 1.0 1.1l,Plstc	1
41	32485	Washer, Flat, 0.38, SAE	1
42	397889	Switch, Rocker, Dpst, On / None / On - (S30 ONLY)	1
43	21195	Screw, Hex, .38- 16 X 0.75, G5	1

TENNANT COMPANY
P. O. Box 1452
Minneapolis, MN 55440-1452